



Newsletter

No. 54 – May 2006

<http://www.medievalpottery.org.uk/>

MPRG Reg. Charity No. 1018513

Secretary's Notes

The Council met on the 12th January 2006, at the British Museum. It was reported that in terms of finances, the group is still doing well. Membership is also healthy, but there has been a slight decline in the numbers of new people joining the group. It is hoped that the promotion of the group through other societies and organisations can raise the group's profile. A stronger European presence may be encouraged, through the proposed creation of three European representative posts on the council. It was suggested that a representative for North, South and Eastern Europe would be appropriate. It was also felt that a new position of Review Editor should be created to help the Editorial Committee. A job description for the new post is currently being composed.

Two 'Ordinary Member' positions will become vacant on the MPRG Council in 2006. If you wish to nominate someone or would like more details, then please send your name, and the name and contact details of your nominee, to the Secretary.

Included in this issue are details of the forthcoming three-day conference in Chester.

A stimulating programme has been put together to explore the theme of 'Ceramics Cloistered and Crenellated - Pottery and the Medieval Establishment'. The conference will be held at Trafford Hall, Chester between the 12th and 14th June 2006.

Finally, I would like to thank those of you who responded to the announcement the newsletter was going digital. Please can members who have received this issue in the traditional manner, but would like the PDF version, send their email address to the secretary. Equally, if anyone has received an emailed version but would prefer a hard copy then please get in touch.

The next AGM and council meeting will be held during the conference in Chester. Any comments or issues to be raised at that meeting should be directed to me before then for inclusion on the agenda.

Anne Boyle
Secretary

Ceramic Production Centres in Europe

We have just heard that the bid to the econtentplus programme has not been

successful but given the very positive response from participating countries, further European funding bodies are being investigated. Ideas on possible avenues for funding would be appreciated. Please contact the secretary Derek Hall (Derek.Hall1@blueyonder.co.uk) or the coordinator Clive Orton (tcfa002@ucl.ac.uk) with any information.

Archaeological PhD Research

Funding Ring-fenced

The MPRG were pleased to learn and would like to highlight that since 2004 the Arts and Humanities Research Council have Ring-Fenced several areas of research for Doctoral Awards. One of the categories is 'Ancient and medieval; materials and artefacts' ON their website:

http://www.ahrc.ac.uk/apply/postgrad/ring-fenced_doctoral_awards.asp

The council highlights the importance of small finds in understanding our social, economic and cultural heritage. But that the number of researchers with the necessary skills to capitalise on this resource has been declining and that this trend needed reversing before the opportunity is lost.

Portuguese Tin-Glaze Ware

Tania Casimiro from is trying to gather as much information as she can about the presence of Portuguese tin glaze ware in the British Isles. She is beginning a PhD in the autumn and would like to have gathered as much information as possible by then. If

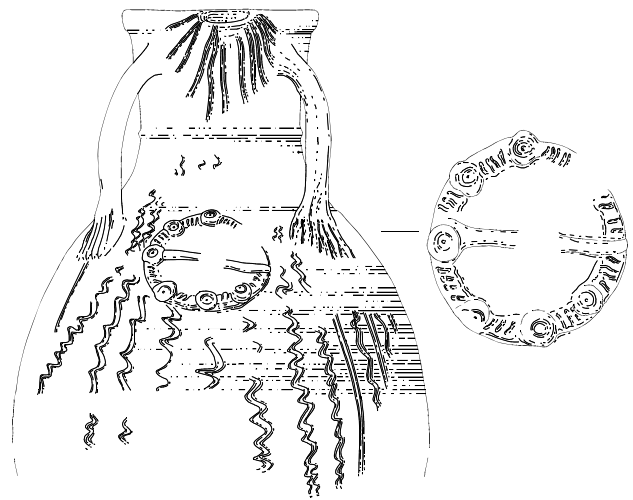
you can help please contact her. Her email is taniamanuel@mail.pt

Brooch Jugs and Curation of Scarborough Ware

Continuing work in Newcastle-upon-Tyne by Andy Sage and Jenny Vaughan has raised two issues that they would like members to help further their research.

Brooch Jugs

They know of the Scarborough Ware example from Bruges and the example from Nuneaton (McCarthy and Brooks, 1988) but they would be interested to hear of any more recently published examples which parallel these and the illustrated example below from the Castle, Newcastle upon Tyne.



The vessel is from an early to mid 14th century context in a reduced sandy fabric.

Curation of Scarborough Ware

As part of researching the factors which affect the varied distribution of Scarborough ware within Newcastle they would like to hear of any cases of Scarborough ware finds in contexts/assemblages of a date later than is common or of pieces of decoration like the anthropomorphic spout illustrated from sites which otherwise contain very little Scarborough ware in order to try and understand the social significance of the type on consumer sites.



If you have any examples or ideas that you think might be helpful please contact Andrew (andrew.sage@dunelm.org.uk) or Jenny (jen.ncas@virgin.net).

Society for Post-Medieval Archaeology

Rivista di Archeologia Postmedievale

International Conference, 25-27 May 2006:

Italy and Britain between Mediterranean

and Atlantic worlds: Leghorn – ‘an English port’ Gran Bretagna e Italia tra Mediterraneo e Atlantico: Livorno – ‘un porto inglese’

As part of the Society for Post-Medieval Archaeology's 40th anniversary celebrations, SPMA is organising - together with the Italian journal *Archeologia Postmedievale* and in association with the Medieval Pottery Research Group - an international conference at the Tuscan port of Livorno in Italy.

The conference will gather on Wednesday evening, 24 May, and after two days of papers and tours of Livorno's housing and defences, will on Saturday morning visit the Ceramics museum at Montelupo. The conference will be held in the Magazzino dei Bottini dell'Olio, which was the state olive oil warehouse in the 18th century. The MPRG has organised a session entitled *Ceramic Connections*. More details, the programme and application form are available on the MPRG website:

<http://www.medievalpottery.org.uk/livorno3.pdf>

The Derbyshire Ware Project

The Derbyshire Ware Project is an experimental archaeology programme. The Project will construct and fire a replica Romano-British Derbyshire Ware pottery kiln and try to recreate Derbyshire Ware pots.

We are serious in our research aims and certain that the DWP will produce valuable archaeological results, but the Project will also be entertaining and educational for all its participants. There will be lots of work to do

on- and off-site, and so we are looking for volunteers to come and assist.

Construction will begin in June 2006, and the firings will occur during **National Archaeology Week**, 15th-23rd July 2006.

The DWP website is the main source of information about the project so check it regularly to find out the latest news. We need **LOTS** of **HELP**, including:

- Good potters
- Bad potters
- Novice potters
- Wood collectors
- People interested in Roman pottery
- People interested in archaeology
- People interested in pyrotechnology
- People who don't mind getting dirty
- People who know about gas analysis
- People who are enthusiastic
- People with a bit of free time this summer
- YOU!

So come and make a pot or two, and help us build the kiln to fire them in. Without your help, the DWP will achieve very little.

More details are available at:

<http://myweb.tiscali.co.uk/thedwp/>

or contact us at:

DerbyshireWareProject@gmail.com

if you can help, or if you are just interested in what we are doing.

Newsletter 55

If you have any news, requests, short articles or items that could be included in the newsletter then please send them to the Assistant Secretary by the 9th July 2006

MPRG Contacts

PRESIDENT: Victoria Bryant

Worcestershire Archaeological Service,
Woodbury Hall, University of Worcester,
Henwick Grove, Worcester, WR2 6AJ

TEL: 01905 855495

EMAIL: VBryant@worcestershire.gov.uk

TREASURER: Jane Holdsworth

44 Merton Road, London, SW18 5SS

EMAIL: jane.bob@virgin.net

SECRETARY: Anne Boyle

81 Sycamore Grove, Bracebridge Heath,
Lincoln, LN4 2RD

TEL: 01522 801038

EMAIL: Anne.Boyle1@ntlworld.com

ASSISTANT SECRETARY: Andrew Sage

25 Chertsey Court, Lower Richmond Road,
Mortlake, London, SW14 7RD

EMAIL: andrew.sage@dunelm.org.uk

ASSISTANT TREASURER (and for back

issues of journal): **Nigel Jeffries**

46 Eagle Wharf Road, London N1 7ED

TEL: 020 7566 9312

EMAIL: njeffries@museumoflondon.org.uk

AREA GROUPS: Beverley Nenk

Dept. of Medieval and Modern Europe, British
Museum, Great Russell Street, London

TEL: 02073238268/8629

EMAIL: bnenk@british-museum.ac.uk

GENERAL: Medieval Pottery Research

Group

c/o MoLSS Mortimer Wheeler House, 46 Eagle
Wharf Road, London, N1 7ED

<http://www.medievalpottery.org.uk/>

